

In a living room by Markham Roberts the black Flower Sepia carpet reads as modern chic while its floral bouquets link it, like the fringed sofa, to a Victorian time.







PRECEDING PAGES Wild things are overhead (an antler chandelier) and underfoot (Antelope Ax carpet in chocolate) in an otherwise traditionally furnished great room by Amy Thebault.

ABOVE The subtle stripe in the Antelope Ax pattern comes across as a plush and exotic version of wide-plank flooring in a blue living room by M Interiors.



OPPOSITE The abstracted leopard pattern of Namir carpeting, along with a fur throw and textiles in lively motifs, temper the formality of a traditionally paneled living room decorated by Markham Roberts.

OVERLEAF In a space as colorful and eclectic as this living room by Thomas Britt, the floor would be lost without a coat—like the Linen Panther carpet—that measures up.





OPPOSITE A custom Wilton carpet strikes just the right balance between pattern and solid, rustic and refined, in a Montana den decorated by Markham Roberts.

ABOVE A Wilton carpet in Wye, a pattern of interlocking Ys, provides a forgiving, family-friendly base in a den by Victoria Hagan.

OVERLEAF LEFT Like a field of silver filings, the carpet in a study by Avondale Design Studio pulls together multiple accents in chrome and stainless steel.

OVERLEAF RIGHT Mojo Stumer Associates used a custom Tibetan carpet with a linocutlike pattern of wavy lines to relieve the solid blocks of white brick, wood panels, and gray upholstery in this study.

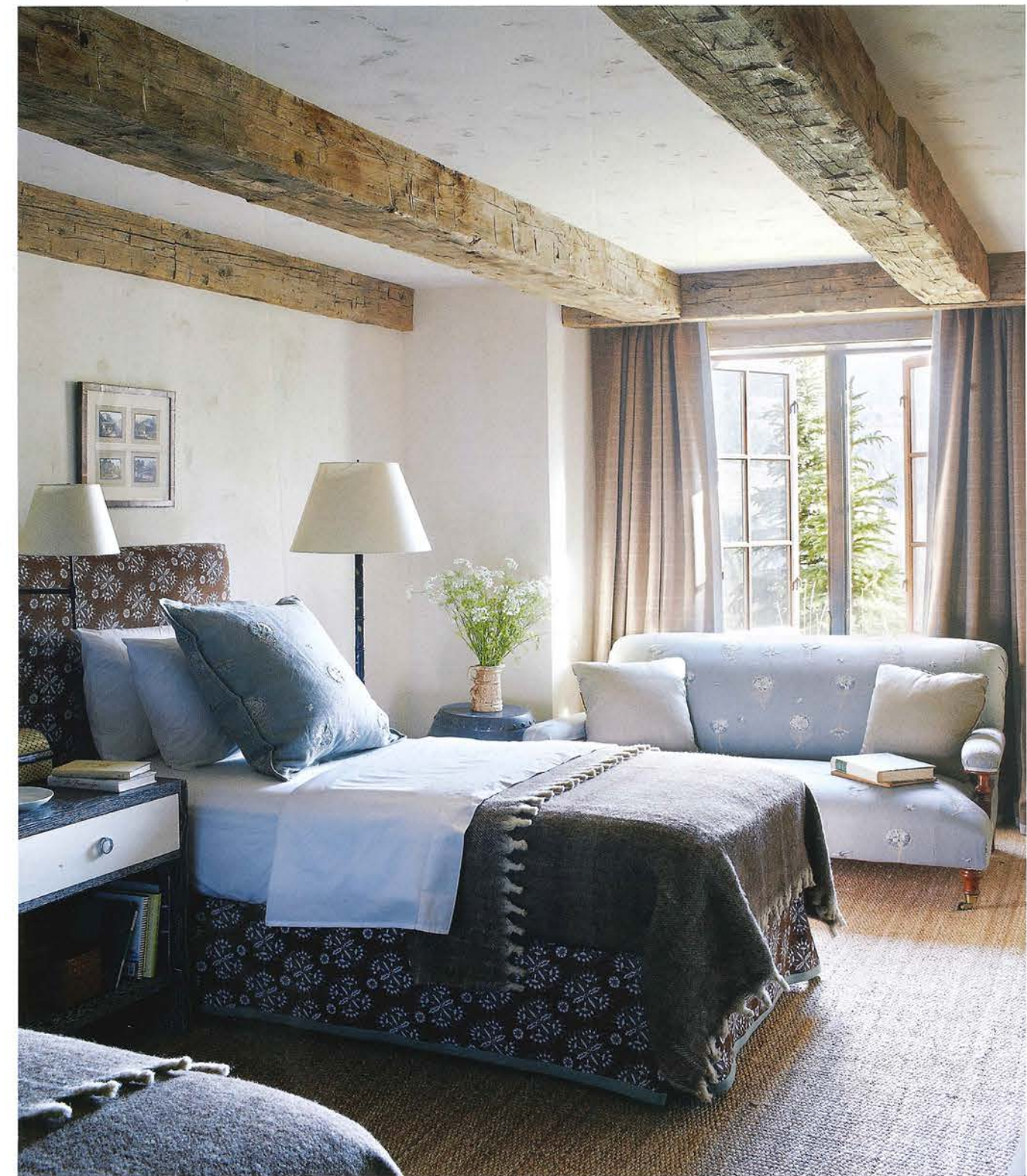
PAGES 136–37 A carpet in the Braddock pattern references the grid of streets that a study by Mark Hampton overlooks.



The green Flambé linen carpet in a bedroom by Markham Roberts seems like an abstracted leafy trellis from which vines have broken away to climb the walls.







LEFT Designer David Scott's choice of a patchwork rug, composed of striped and checked pieces of kilim carpets, maintains an atmosphere of elevated rusticity in a bedroom dominated by a fieldstone fireplace.

ABOVE A wall-to-wall carpet woven of jute matches the tone but counters the weight of rustic beams in a lodge bedroom decorated by Markham Roberts.